

kh 81

Centés 05-1

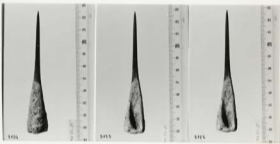


Exp 75

EXP 75

EXP 75

✓



Exp 75

EXP 75

EXP 75

EXP 75

✓

✓



Exp 75

EXP 75

EXP 75

EXP 75

✓

Exp 75

✓

kh 81

butils os 2



EL 8/92 1074-1

EL 8/92 1074-1



EL 8/92 1072-1

EL 8/92 1072-1



EL 8/92 1073-1



EL 8/92 1073-1



EL 8/92 1073-1



EL 8/92 1073-1



Kh 81

Gutts 003



Kh 81 205-1



Kh 81 213-1

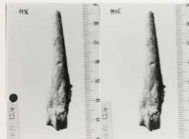


Kh 81 220-1



Kh 81 128

Kh 81 128



Kh 81 124



Kh 81 124

Kh 81 124

kh81

Cutte os. 4



2301 KLB/05



kh84 22702



22701 KLB/05



Kk7

OKKOT 5  
Gatlo 05 5

✓



Kk7/05  
2236-3



✓



Kk7/05 2238-1

✓

KLTI

Outils Os. 6



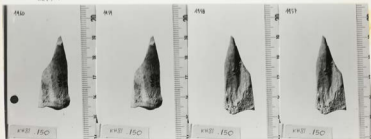
KLTI/84 2321



2322

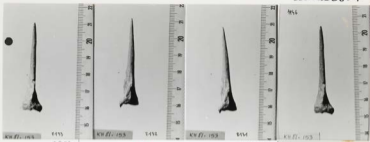
KLTI/84

KLTI/89 2321



Kh 71

Outlets 4  
Antes 4



Kh D. 184

0155

Kh D. 185

1454

Kh D. 185

0154

Kh D. 185

2352-1

V

RLP/455

MS



Kh D. 184

1450

Kh D. 184

2409

RLP/40

Kh D. 185

2373-1

RLP/MI



MS

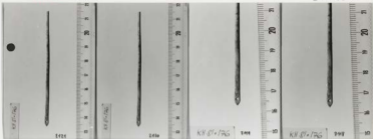
MS

MS

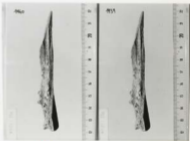
2375-1 V

K401 Lh 81

Guedes os. 8



60/12 1981



2048-  
Lh/170



2500.2

Lh/170





Nh 81 kh81

Da Na 05-1  
Aubels 00.9



3416



3417



3418



3419

✓ 3416/192

✓ 3417-1

✓



3420

3421

3422

3423

3424  
Rt/192



3425

KH.81.192



3426

KH.81.192



3427

KH.81.192



3428

KH.81.192

Kh 7

04.11.10  
Cantilo ss-lo



✓ 4.6/4 2519-

✓

2506-1 KH7/KH7

160  
177



KH7-154

KH7-154

KH7-154

KH7-154

✓

✓



KH7-154

KH7-154

KH7-154

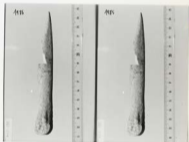
KH7-154

Kh 81

Couteau osseux



Kh 81 / 2514



1684

Antilles no. 12



2520



2541



2542

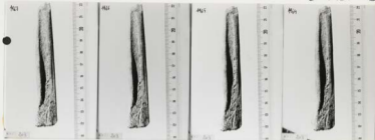


2543

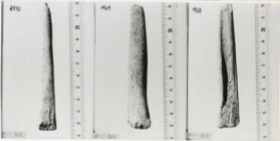


kh81

Coutils no-13

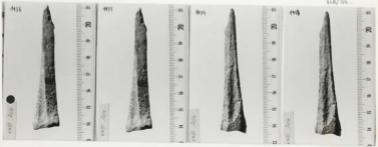


kh81/003



2562.1

kh81/004



kh 81

kh 81

Quinto 00.14

Quinto 00.14

M16

M17

M18

M19



KLf/207

KLf/207

KLf/207

KLf/207

✓

1977.3

✓

KLf/207