

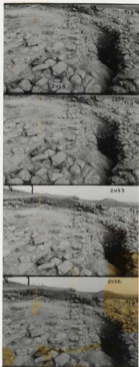




Kh83b Vues générales

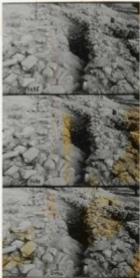
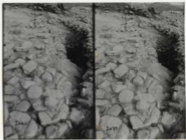
E de 483/485





Kh 83

400 / 483, 485



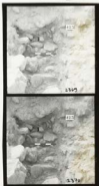
R483

100 / 423 / 435 / 441

Sol 440 .

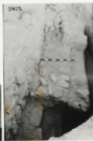


face E de 423 / 435 .



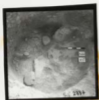






KH83

S. 85
sol 417



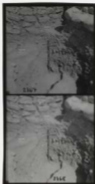




#H 85

Sondage sans S.90

stratig. S. 83 / S. 84 / S. 90



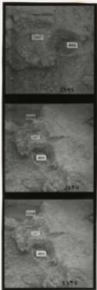
KH85

S. 94
sol 397





S. 94. Jurgens 307/4-16.



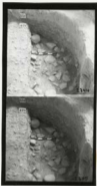
KH 83

S. 94
layer 416



B.K.H. 83
KH 83

sondage sous S.97
loc 419





justape .



niche .



mar ind. 336



KH 83

S. 103 .
Sol 432

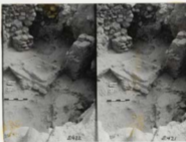
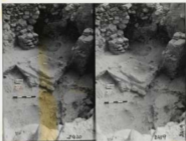


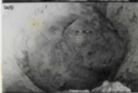
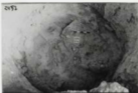


KH 83

S. 405

501 432











KH 85

Sépulture 398
dans S.97

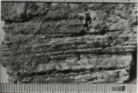
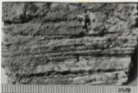
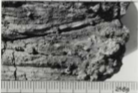
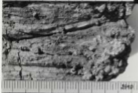


KH 83

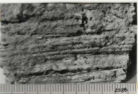
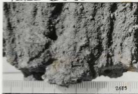
Supplément 421
Séquence 629

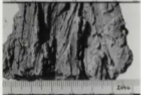
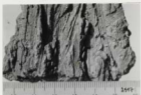


K1485



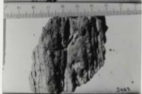
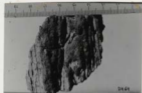
Textura de S. 95





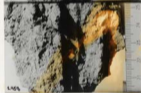
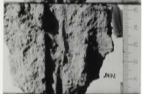
KH 85
KH 83

Toiture de S. 85



LA 85
KH 83

LA 85
Toiture de S.85



KH 83

Taitana de S. 85

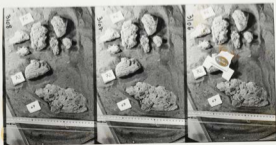
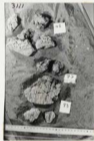
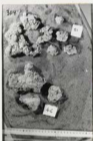
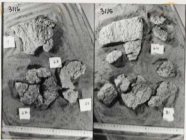
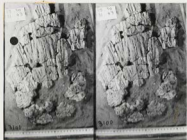




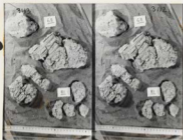
2484-89







KH 95



Toiture S. 85







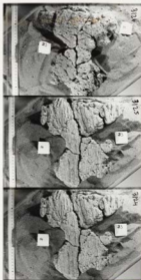
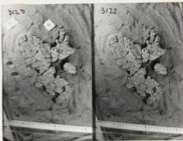
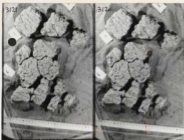
R 85
KH 85

Toiture de S.85
Toiture de S.85



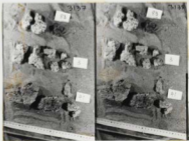
KH 85

tailure de S. 85



KH 85

Tôiture de S.85.



KH 85
KH 85

S. 85
sol 407/414

