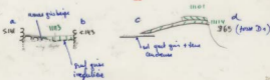
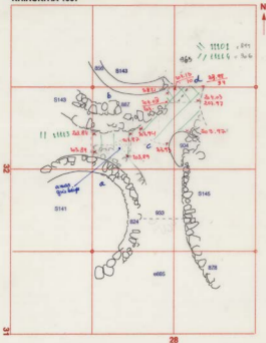


5/8/97

2

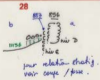
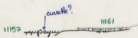
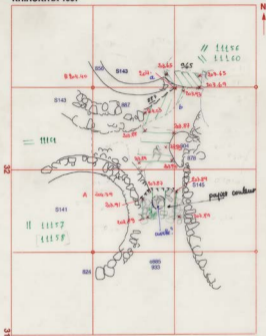
KHIROKITIA 1997



8/8/97

5

KHIROKITIA 1997

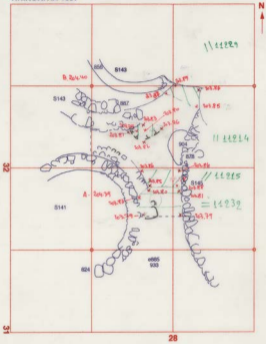


Chirokitia
Yone

13/8/97

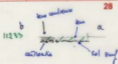
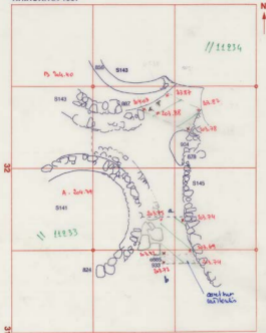
9

KHIROKITIA 1997



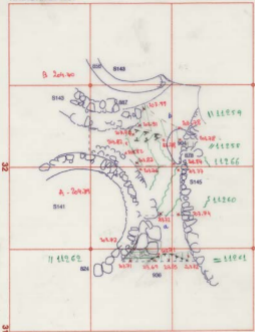
14 / 8 / 97 (10)

KHIROKITIA 1997

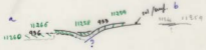


12/8/97

KHIROKITIA 1997



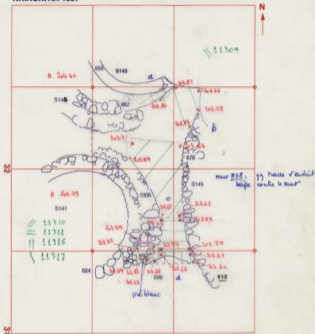
28



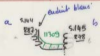
19 / 8 / 97

KHIROKITIA 1997





28



22 / 8 / 97

15

KHIROKITIA 1997



a

b

11530

11531

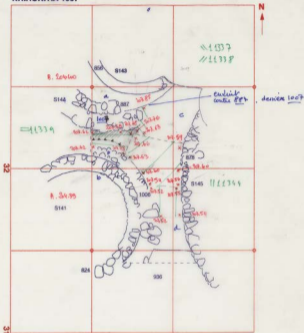
deux aspects (en coupe et sur.)

pas ?

= composés d'une

partie dérivée du

mer sans

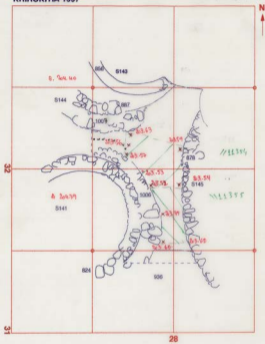


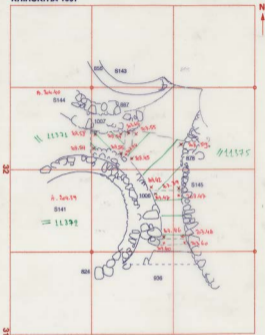
28

b
2.00
En construction
niveau 1007

a
2.100
niveau 1007
partiellement en air

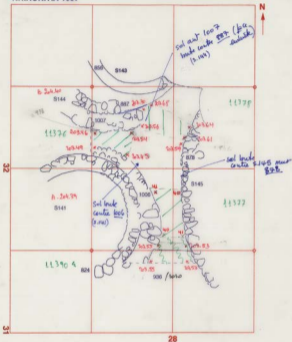
d
11334
11337
11338
11336
c





1007 near D.





KHIROKITIA 1997

28 / 8 / 197

20
fin

