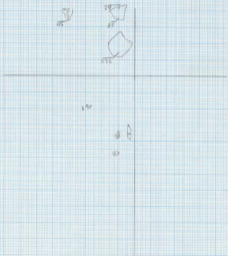


13/07/95 + N loc 580 1/5°

z = N 235  
G 1.75

h = -0.65 pas support p. l'air  
h = -0.65 pas support p. l'air

→ N 1310+136 loc 520 V5°  
relief n° 2



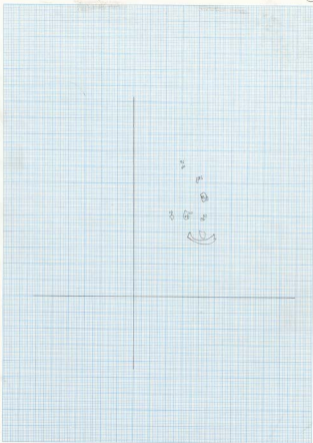
13/02/90 loc 580

1/5"

→ N

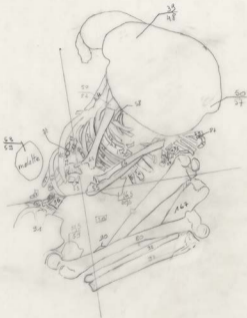
relevé n° 3

③



← N

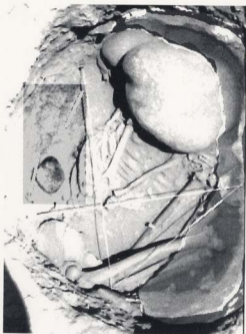
T580c  
16/10/1974



d'photos

taille de l'image  
L: 25  
H: 48,75  
N

7580c  
A10215T  
51



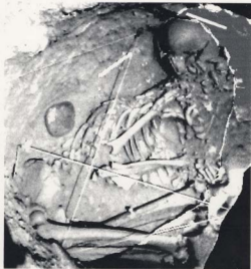
d. colas M

N 4 7180d  
23/04/95  
⑤



L-2

T380 d  
23/07/95  
A



taille de l'image . L: 26,67  
H: 20

cf. catalogue

27/07/55  
TSSC  
N 13

à voir avec le 1002/55





27/07/95

T 980 e

← N 13



Taille de l'image { 21  
                          { 28

cf. calque 13

Kh 95 x 5/7/95

A - N - 4.80  
E - 1.90



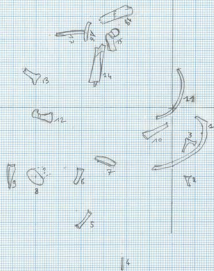
Case 32/25

1/2

loc 339

h = 70?, 20

niveau n° 1



Kk 95

5/7/95

A = 11 - 4.80  
E = 1.90

→ N

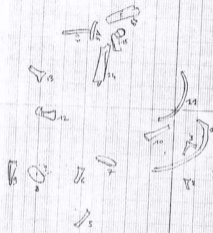
Camé 32/25

1/2

loc 339

l = 709,1

wh 20-1



13

KH95 x

6/7/15

A.N. = 4.80

-DN

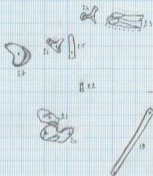
cave 37/25

7/2 loc 939

h = 202, 20

E = 1,90

niveau a° 2



KH95

6/7/15

A H. 4,80

DN

carte 31/15

7/2 loc 937

h = 202,20

E = 1,90

niveau n° 2



Kh 95 \*

7/7/95

A = N = 4,80

E = 1,30

→ N

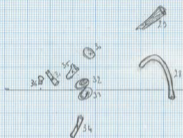
cart 32/25

1/2

Loc 933

relevé n° 3

h = 202,10



Kh95

7/7/95

A = 11 = 4,80  
E = 1,90

→ N avec 32/25

1/2

loc 939

niveau n° 3

h = 200,10



Kh 95 v 7/7/95

A = N = 1,80  
E = 1,90

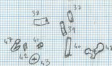
→ N

anci 32/25 1/2

loc 939

h = 202, 20

relevé n°4



A



Kh 95

7/7/195

A - N = 1,80  
E = 1,90

→ N

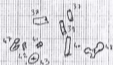
cote 32/25

1/2

loc 939

h = 207,20

relevé n°4



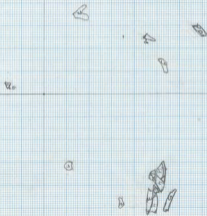
△ Kh 95 6/07/95

← N carré 33-25

1/2 locus 940

N = 0,60  
E = 4,70

RePlan u° 1  
h = 201,05



1/2000 ft

11 →

5612018  
10/195  
20  
3148  
9412  
095 200 56 77



♂ 104195

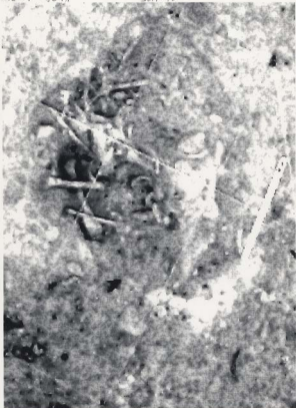
H: 36,83  
L: 16,45  
♂ 104195

♂ 104195

♂ 104195

♂ 104195

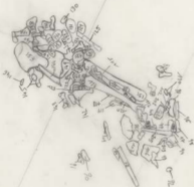
♂ 104195

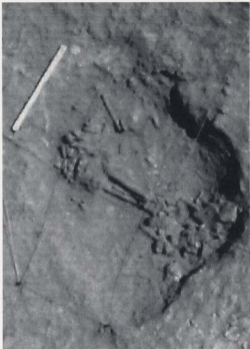


♂

Plan

N →  
Plan  
10104195  
21 46  
102 360  
26 95





taille w=3

10/10+195

Kh 95  
loc 960  
3612

a - N

taille  
de l'image  
L: 42,67  
H: 32

J. Colquhoun

K695

11/07/95

← N

carré 33.25

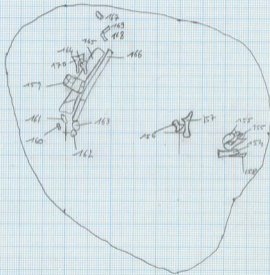
1/2

locus 940

N = 0,50

E = 4,70

relevé n°4

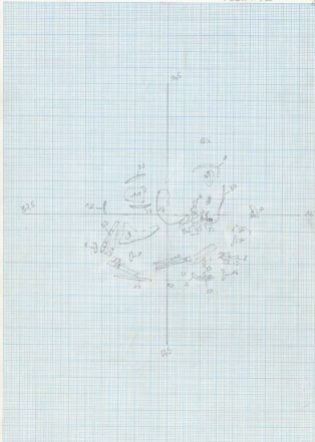


31/03/1955 Luc 555  
9383

N<sup>o</sup>  
relevé n° 1

échelle 1/2

②



A. N. = 4,50 E. = 2,75 carré 32/25

h = 202,10



1/08/95  
- 11  
niveau n° 2  
loc 355  
3183

①



di photo ③

1/04/75  
sect n°2  
loc 356  
9323

(3)



d'calque (3)

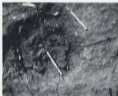
T 350a  
taille de l'image  
L: 33,33 (4)  
H: 25



0163195

+ 955 a

(B)



8.08/85 2-N 923  
niveau n°3 1985

échelle 1:2

6

sur A16, A17, A18



3/10/95 - N 923  
Abou 1°4 T. 35% Ab: 1/2

7

*[Faint handwritten notes and scribbles in the center of the page]*

Abou 1°4  
3/10/95  
- N

3108195

relief n° 1

N



H. 202,07

T 334

8729



4 plus 10 A

T 356   
2/08/35

$\left\{ \begin{array}{l} l : 26 \text{ cm} \\ h : 19,5 \text{ cm} \end{array} \right.$



*cf. volume 21* 



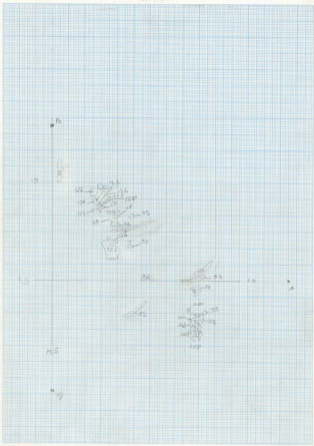
→ T 356  
218195  
B



6/20/55

site # 2 7.256 822  
ch. 1/2

13



B N = 0.75  
E = 475.5

C N = 65.5  
E = 466

D N = 0.75  
E = 4.46

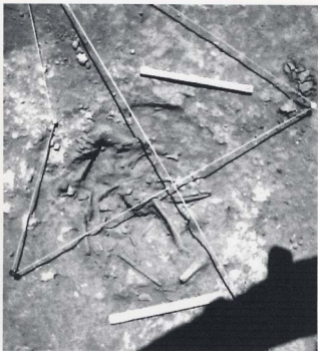


B N = 0.75  
E = 475.5

C N

h = 202

*Handwritten signature or initials.*



↑  
Coordonnées du clan

T 961  
Z 18195  
L: 26 m  
h: 19,5 m

cf. catalogue

T 9626  
3102195  
3



T 8611  
3108195

(4)

← N

Haitian - Loc.



Comp 3

T 9626  
2108195  
2026  
L. M. S. -



cf. calvo 18

T 911  
L 10815

← N ↗



J. P. P. P.



7361  
4108195

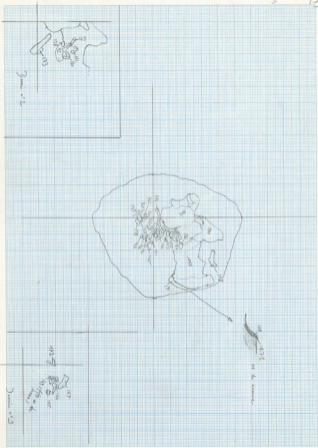
l: 29  
h: 26,45



T36Ac  
6/12/95



↑ N  
1:2000  
1:500  
1:100





- A. 16,50m
- B. 18,5
- C. 10,5
- D. 12

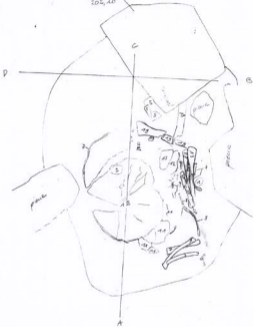
↓ N  
 100m  
 1/2000  
 1/2000

d'après

caisse 17  
33/25

17

202,12  
104,40



51035  
T 364  
niveau n°1

A: 16,5 cm  
B: 18,5  
C: 12,5  
D: 15

h = 202,12  
encre E: 1,90  
N: 0  
of atque B

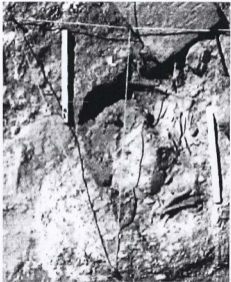
2  
B



taille de l'image L: 35  
H: 26,25

7344 3/08/35

27  
A



taille de l'osage L: 35  
H: 26,25

7366a 3/08/95

3108 MS

T 364-5





6<sup>th</sup> 10/10/95 sketch n°2

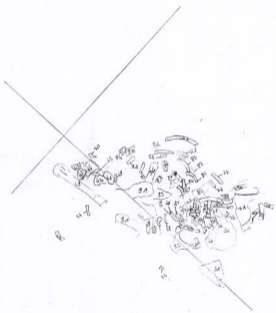
sch. 42  
T364

13

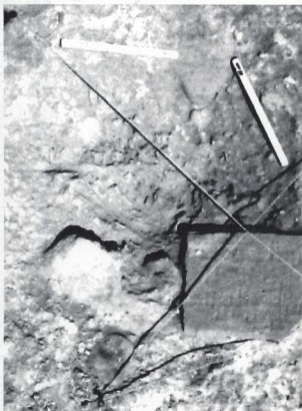






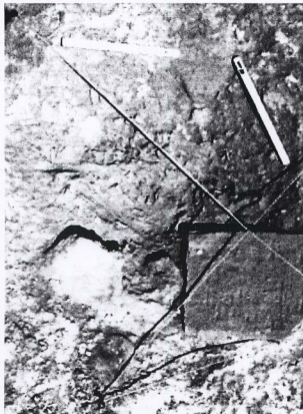


L  
T 364 11/06/95  
Belux.03



T364  
 objet n°3 11/08/85

taille de l'image: L: 32  
 H: 24



T964  
no 3 21/01/85

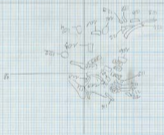
feuille de l'image : L : 32  
H : 24

T 9666  
10/08/87  
12



10  
11/08/35  
n° 6

T 364 del. 12 18







1/10/85  
T 964

dl. 1/2  
ad. 1/2  
↑ N (S)

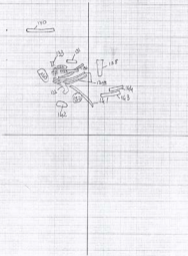


21/08/35  
T 864

di. 1/2  
niveau n° 3

↑ N

16



T 966 a 16/08/95

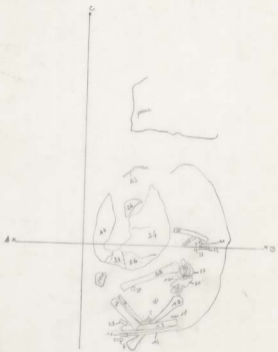
taille de l'image : L: 32 } pour la cyle photo  
H: 24 }

→ N 



T 366a  
relief n° 1  
6/1 17/01/85

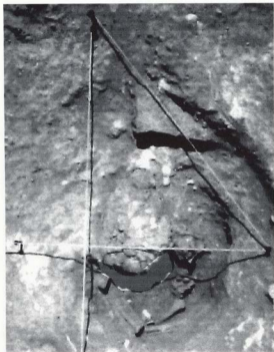
②



A: 75  
B: 15  
C: 265

D: 15

cf photo ②

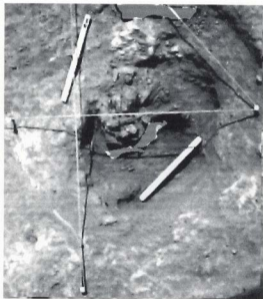




cf photo ④

T 266 b 17/08/55  
Mélani n°2

5





T 9666 17/08/95

selon n°2

taille de l'image

L: 52  
H: 24

} par la sole photo

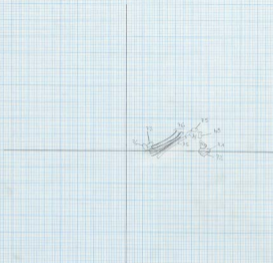
16



AB108195  
relevé n°3

sch. 1/2

↓ N



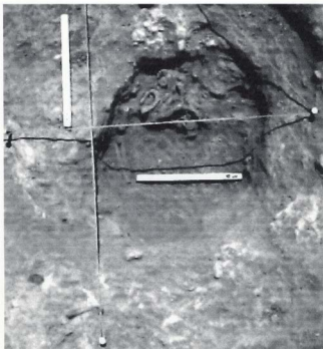
T366 c  
relat n°4  
20/08/85

↓ N

181



20/08/85

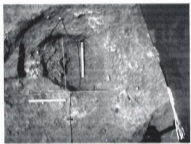


TB66c  
 relevé n°4  
 18/08/95

taille de l'image L. 34  
 H. 255

cf. volume 18

T 366 c  
niveau n°4  
18/08/55



↓ N

20/08/95  
T 966

relief n° 5  
écl. 42

