

Kh93

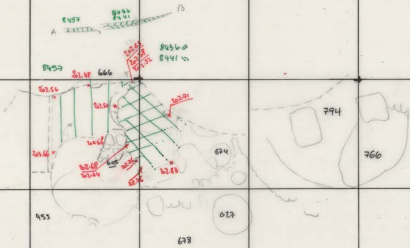
2

N ←

36

35

2b



5.8/8/93

Kh93

3

N ←

36

70545

35

76



9. 18/93

Kh93

4

No

36

H = 205.64

35

26



11 18/93

Kh93

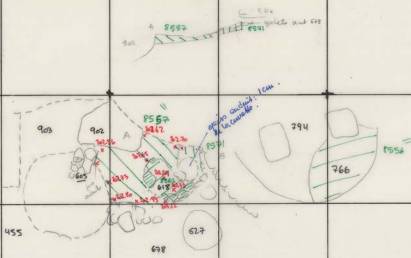
NE ←

36

35

5

26



13/8/93

Kh93

6

N ←

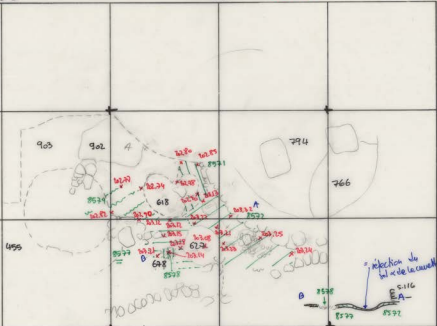
36

35

205.69

23

26



17/8/93

Kh93



N ←

36

203.95 +174 205.69

35

27

26

18/8/93
19/8/93

Kh 93

8

N ←

36

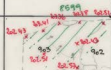
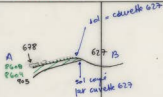
35

= 25.65.

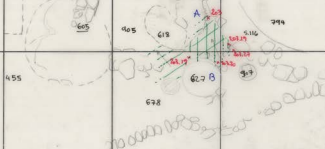
27

26

170
fin



8600 || 8604



8614 = 1004
766

23/8/93