

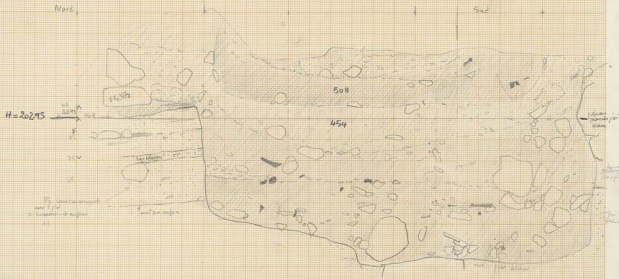


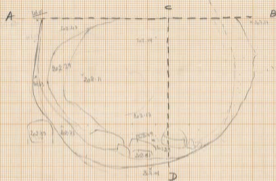
Kn 84

coupe NS Jan 454 - 36/26 1/2  
= A-B

secteur Est.

29.7.84





Kh84

H. 22.92

coupe EW 36/26

faces 488  
460

1/20

36/26

coupe  
36/26

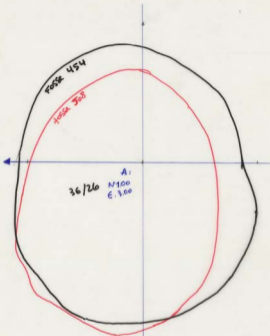
36/26 36/27

Est

W



(Colques 6) 15



KH 86 300  
 ← N 454 +

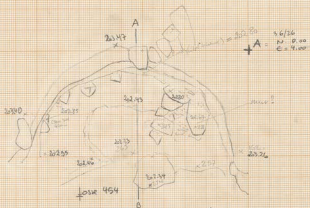
A: N 0°  
 E = 4.00

borda fosse 454 - 36/26

ref.  
 H = 24.88

100°

N ← 24/7/86



coust E-V

Kh 86  
X 25.7.86

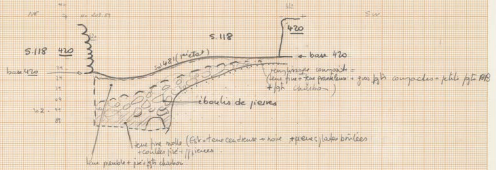
1/20

36/27

louis 529

coupe NE-SW  
coupe NE-SW

H = 203.89  
Mf



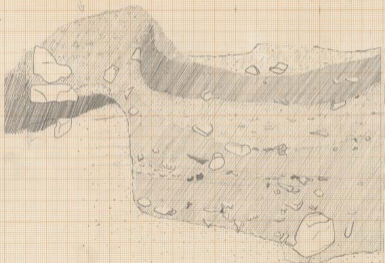
13

25/7/84

1/10

1/10

1/10



1/10

1/10

1/10

1/10

1/10

1/10



tn 84

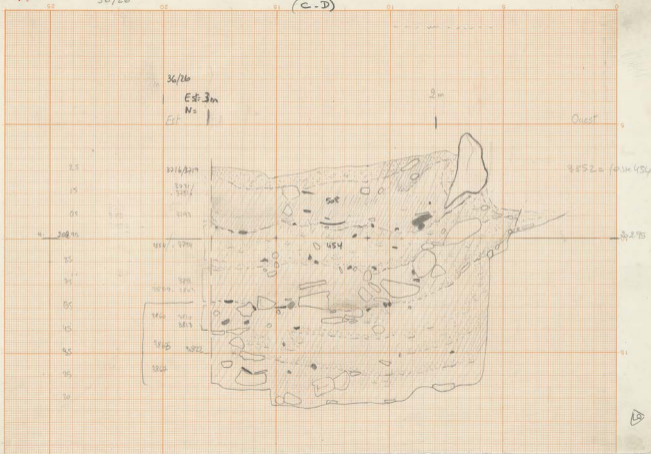
X

locus 454 - 508  
36/26

1/10

comp Est Ouest  
(C-D)

2.8.84



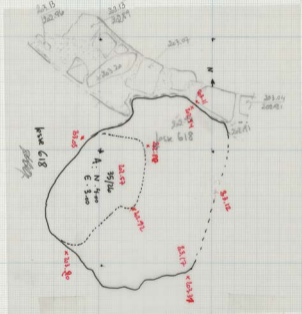
KH 88

mur 661

6/8/88

1/20°

H = 204, 81

35/26  
35/26

KH 83

$\frac{1}{20}^{\circ}$

pièces posées de cha- . Trouves de couche ② surmontant le mur 423.



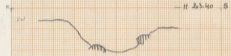
H. 28 52.

25/26 35/25  
36/26





N →



36.27  
36.26

36

92/92 10m

N. 26.24

5.00

→ 100M

1/10

485

