

KH83.

22-7-83

x

150/200

loc 369 -

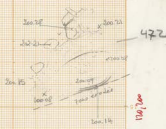
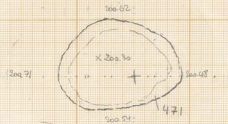
loc 471 - 472

1/20

N

33/23

150/100



150/100

13/7/89

sol ext. 366.

loc 683
et 687

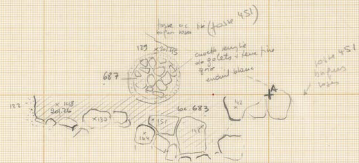
N ←

+ 160,300

172

= 202.74

↗



33/24
M 25
E=2m

+ 160,300

K&M
24/7/87

N
2

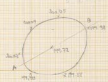
1/20

circles 693
of locus 727

3

150, 200

1/100



N ← km 01 ouest du sol 727

1/10

cad 284/400

Khiokita 1989 -

100,00

+

300,20

200,00

199,82

199,82

sol 16/7/87

sol 17/2/87

33/25

33/22

100,00

KW 34

27/7/94

mur 320

1/20

carte 32/23

70

104

52

93

71

20/20

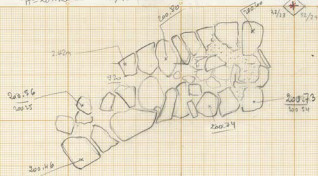
x 110
y 200

H = 203.2

1/2 int 366

33/23
43/13

150
200



x 150
y 170

x 110
y 170

Kh 95 x 3/8/95

1/20

loc 945

carte

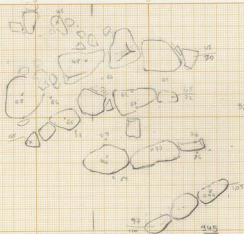
32/23

autoroad . road 945
284

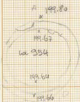
H = 200, 69

(0)

N ←



150
x
150
31/24
31/23



KN 95

23/8/95

x 1/10

Cote 34.5/22

H = 200.72

Charalambos
Efthymiou

Kh 95 X 24/8/95

100/100 N

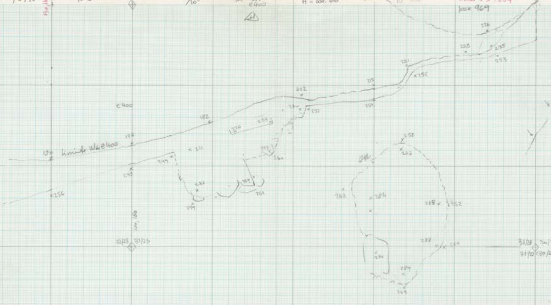
1/10°

50' 80' c 400

H = 200.66

101' N

coal 95/204
max 969



31/02 24/25
31/02 30/32



60, 110

KH 95 x 24/8/95

32.3 / 22.3.

1/10

loc 941

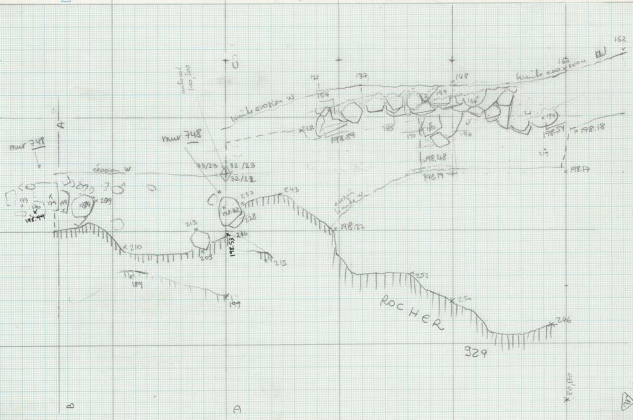
- 929 -

N  

cad 95/284

H = 200.69

110, 220



Kh 95 X casé 125 29/8/95

X 169

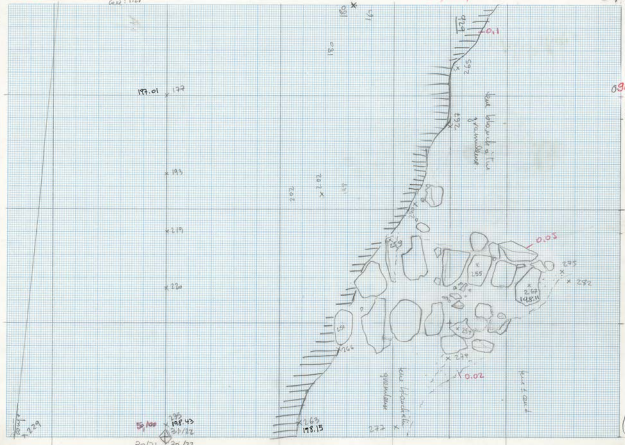
1/20°

H = 200.78

ad / 204

loc 948

casé 30/22



55/100 x 135 148/43 21/22 30/21 30/22

165 158.15

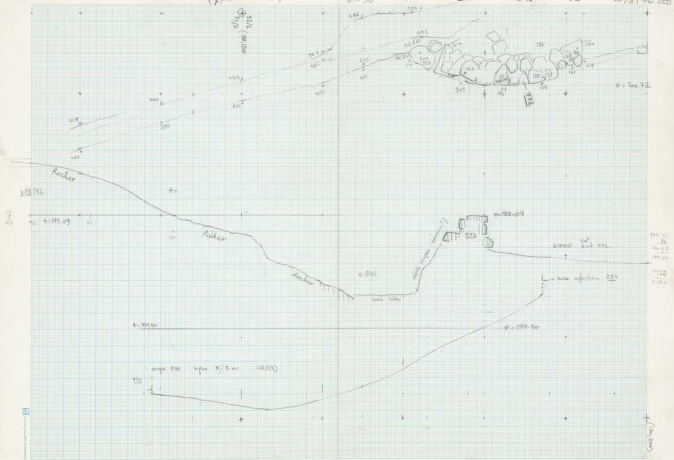
090, 130

13

(plan au 1/50000)

K 936 e400 - mur 372

→ N 1/50 2-18/06 28

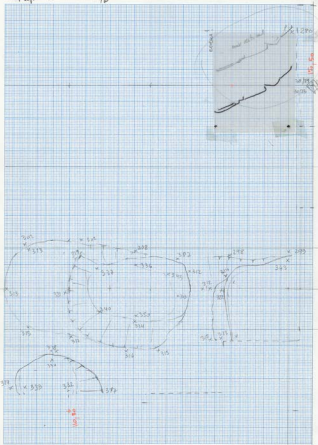


Kh 87a bn 284
1 sept 97

Jordan 1908
1909

H 199-97 20/23.4
N ←

23



KH 97

1^{er} sept 19971/60
Rocher
H=199.97

0.75 → N

32/22.3

X

