

Khob 7 8/7/06

Carte 3

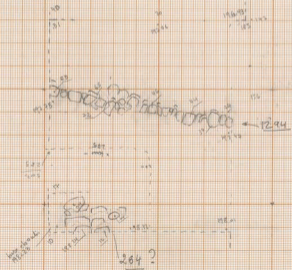
1/50

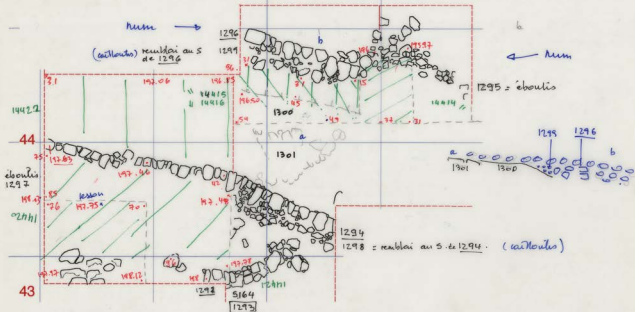
Jguyugis

NS 1

N ↑

45/23 45/24
44/23 44/24

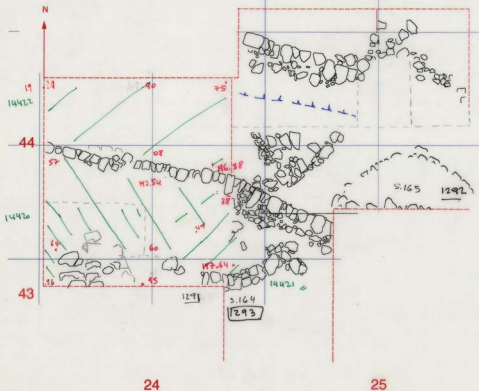




KHIROKITIA 2006 Chantier N

10/7/01

3



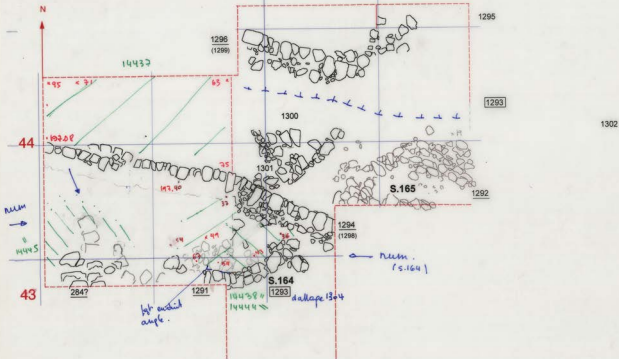
24

25

KHIROKITIA 2006 Chantier N

12/7/06

5



24

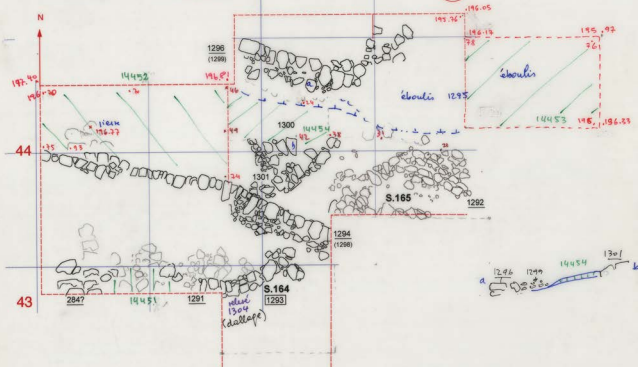
25

KHIROKITIA 2006 Chantier N

13 / 7 / 06

6

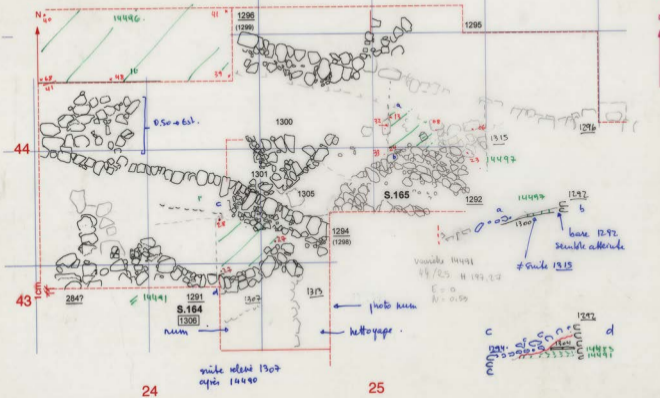
H 197.50



KHIROKITIA 2006 Chantier N

18 / 7 / 06

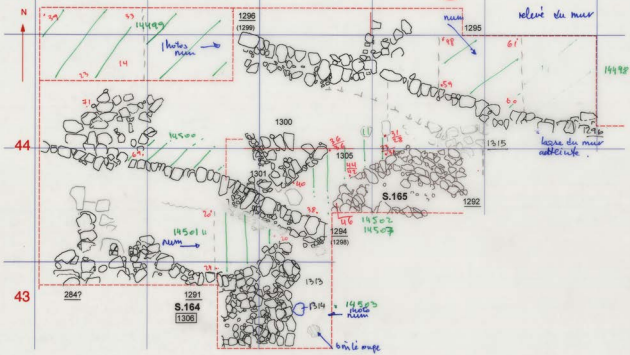
10



KHIROKITIA 2006 Chantier N

19 / 7 / 06

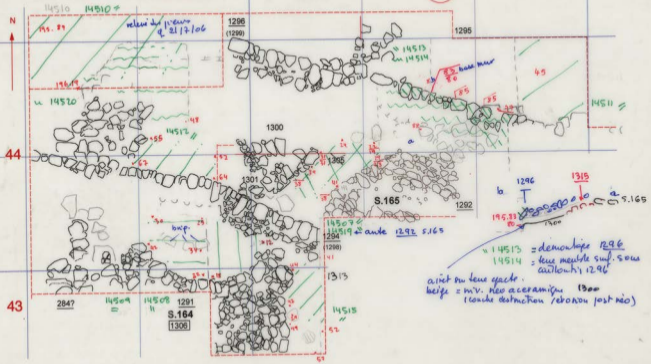
11



KHIROKITIA 2006 Chantier N

20/7/06

12



24

25

KHIROKITIA 2006 Chantier N

23 | 7 | 06

14



44

43

14531

relevé de 1296

1296
(1299)

1285

14535

1300

1296

1315

1305

S.165

1292

1294
(1298)

1301

2847

1291

S.164

1306

1313

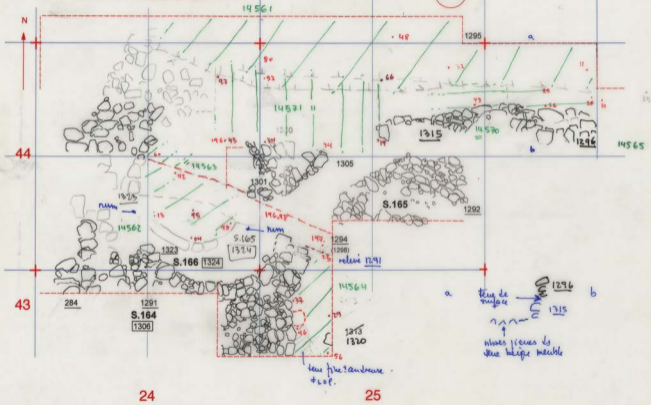
24

25

KHIROKITIA 2006 Chantier N

26/7/06

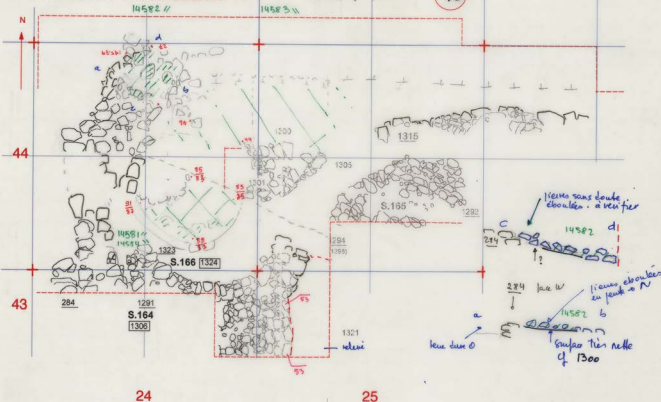
17



KHIROKITIA 2006 Chantier N

2817 106

19



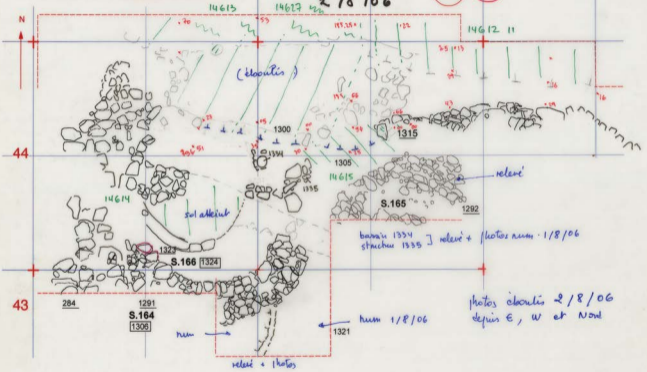
24

25

KHIROKITIA 2006 Chantier N

1 / 8 / 06
2 / 8 / 06

22 - 23



(cloacis)

relevé

bains 1334
strucure 1335] relevé + photos num. 1/8/06

photos cloacis 2/8/06
depuis E, W et Nord

num 1/8/06

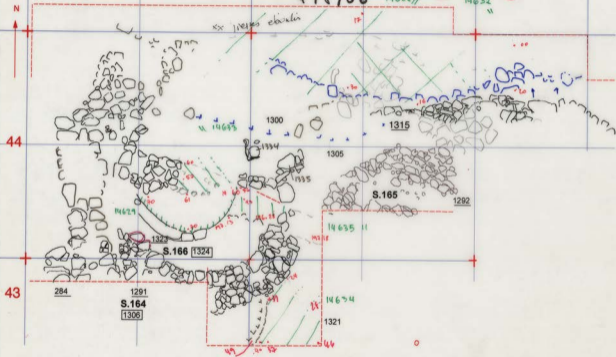
relevé + photos

KHIROKITIA 2006 Chantier N

3/8/06
4/8/06

24

25



44

43

24

25

KHIROKITIA 2006 Chantier N

11/8/06

30

14675

44

14674

1349

43

284

1291

S.164

1306

S.166

1324

1323

1300

1334

1335

1326

1315

S.165

14672

14673

1348

1321

24

25

KHIROKITIA 2006 Chantier N

13/8/06
14/8/06
16/8/06

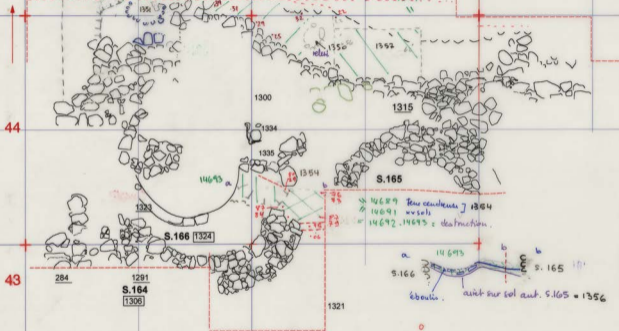
31

32

14680

14682

relevé + coupe



44

43

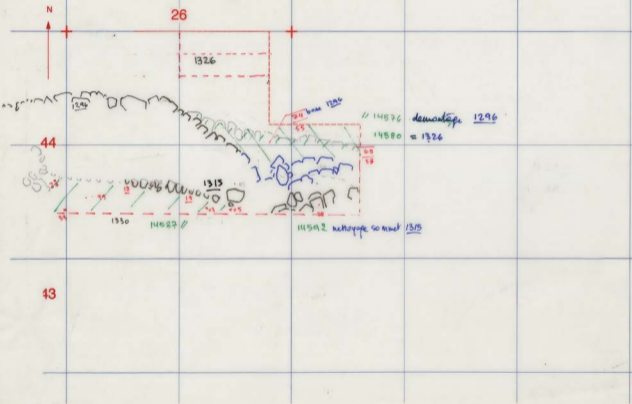
24

25

KHIROKITIA 2006 Chantier N

28 / 7 / 06

19



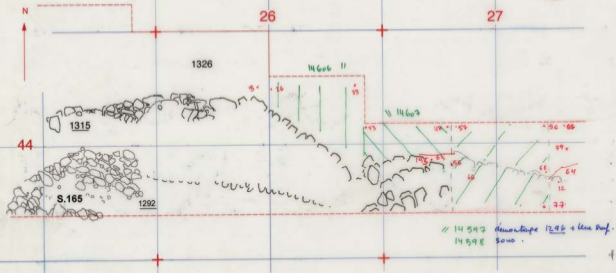
44

43

KHIROKITIA 2006 Chantier N

30 / 7 / 06

20



KHIROKITIA 2006 Chantier N

118106

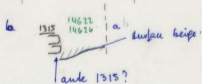
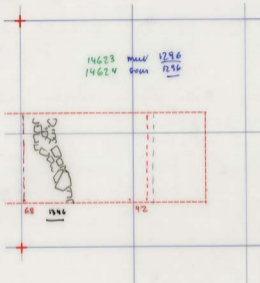
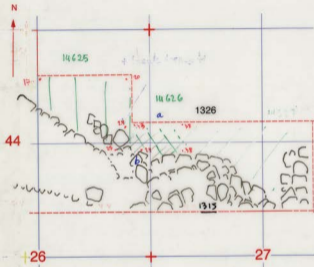
22



KHIROKITIA 2006 Chantier N

2 18 106

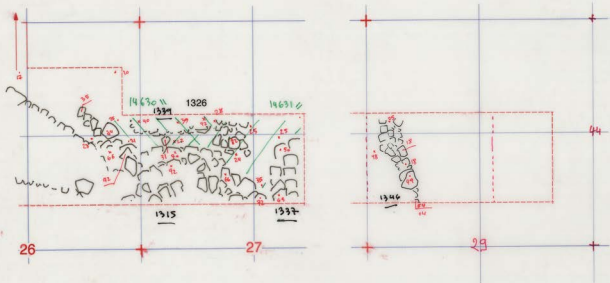
23

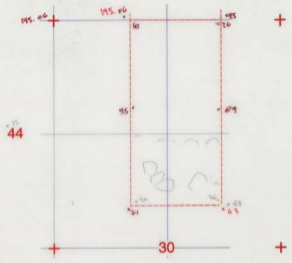
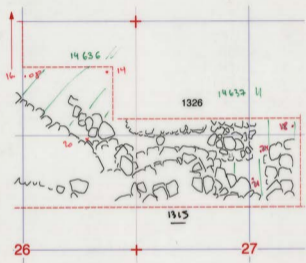


KHIROKITIA 2006 Chantier N

3 18 106

24

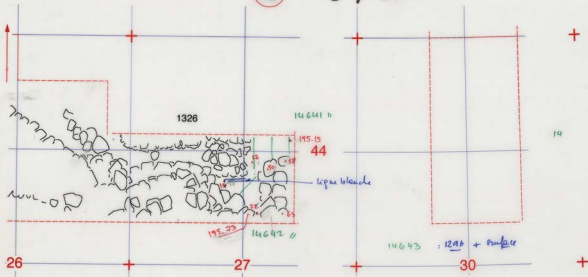




KHIROKITIA 2006 Chantier N

26

6 / 8 / 06



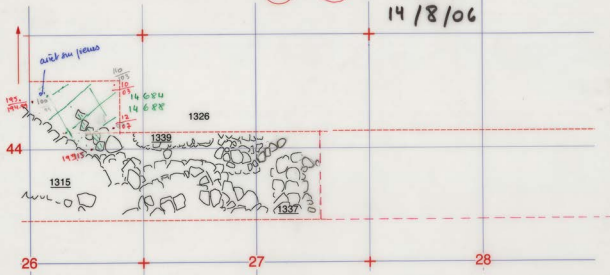
KHIROKITIA 2006 Chantier N

31

32

13 / 8 / 06

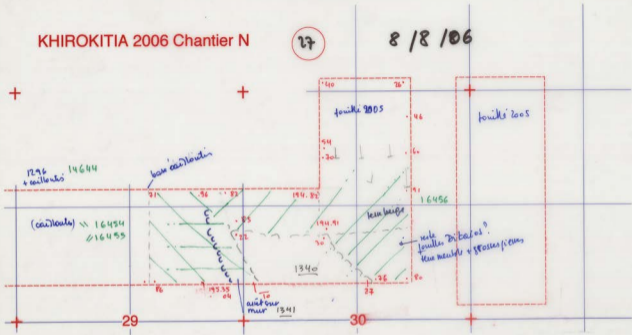
14 / 8 / 06

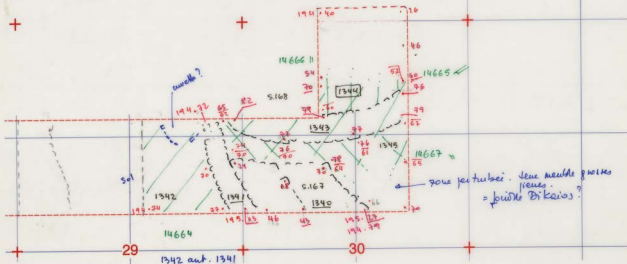


KHIROKITIA 2006 Chantier N

27

8 / 8 / 06





poutre per tubéi. deux meuble poutres pieux = pointe Di Kaios?

KHIROKITIA 2006 Chantier N

32

14/8/06
16/8/06

